

HTSP-600F-12 (12V, 50A, 600W, PFC)

Product Summary:

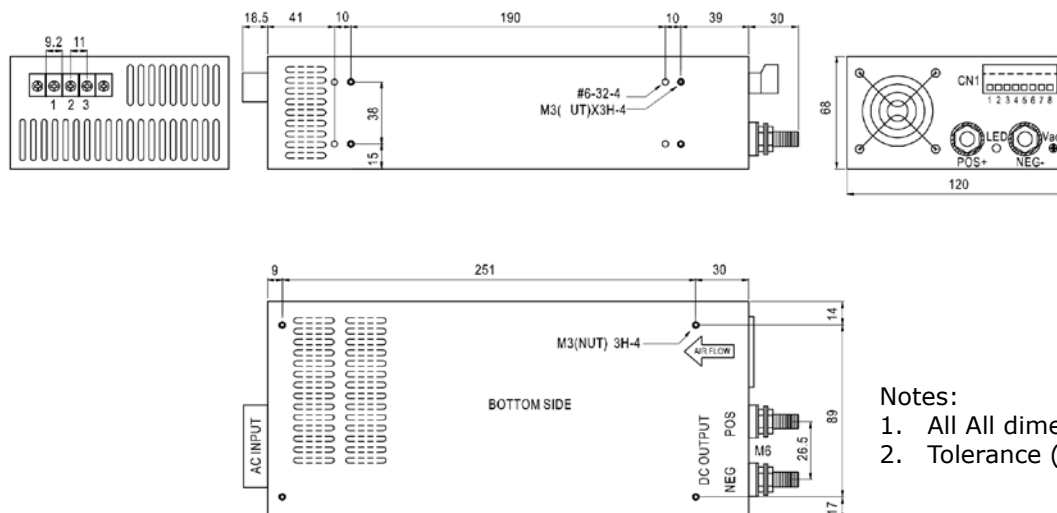
- PF>0.98@230VAC
- EMI Meets EN55022(CISPR22) Class B
- Low Power Consumption
- Approvals: UL/CUL/TUV/CB/CE
- Forced Air Cooling by Built-In DC Fan
- Built-In Remote Sense Function
- Built-In Remote ON/OFF Control
- Built-In Power Good Signal Output
- Can Adjust from 20% to 100% Output Voltage by External Control 1V to 5 VDC
- 5VDC
- Protections: Over Load / Over Voltage / Over Temp. / Short Circuit
- 100% Full Load High Temperature Burn-In Test



Technical Parameters:

| | |
|--------------------------------|--|
| Input Voltage Range | 180-260VAC |
| Input Frequency | 47-63Hz |
| Inrush Current | Cold Start, 15A/115VAC, 30A/230VAC |
| Output Adjustment Range | ±3% Rated Output Voltage by Potential Meter 20% to 100% by External Control 1V to 5 VDC |
| Line Regulation | ≤0.5% |
| Output Over Load Protection | 105%~135% Hiccup Mode, Auto-recovery |
| Output Over Voltage Protection | 115%~145% Rated Output Voltage |
| Rise, Hold Up Time | 50mS, 20mS at Full Load (Typical) |
| Hi-pot Isolation | I/P-O/P: 3KVAC, I/P-FG: 1.5KVAC, O/P-FG: 0.5KVAC |
| Operating Temperature Range | 0°C to +40°C@100%, -10°C@80%, +60°C@60% Load |
| Storage Temperature Range | -40°C to +85°C, 0 to 95% RH (Non-Condensing) |
| Safety Standards | UL60950-1 |
| EMC standards | EN55022 Class B EN61000-4-2,3,4,5,6,8,11, ENV50204 |
| Cooling Method | Forced air cooling by built-in DC fan Cooling Fan ON/OFF Auto Control |
| Weight | 1.08Kgs/pcs |

| Product model | DC output | Load regul. | R&N | Efficiency |
|---------------|------------|-------------|-------|------------|
| HTSP-600F-12 | 12V, 0~50A | 0.5% | 120mV | 84% |
| HTSP-600F-24 | 24V, 0~25A | 0.5% | 200mV | 89% |



Notes:

1. All All dimensions in mm.
2. Tolerance (except cable length):
xx=±0.04
xxx=±0.010

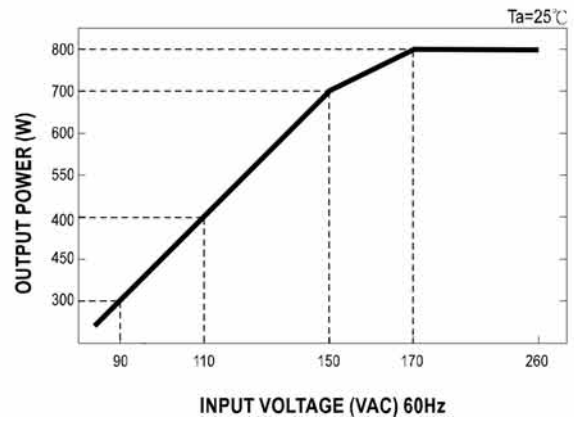
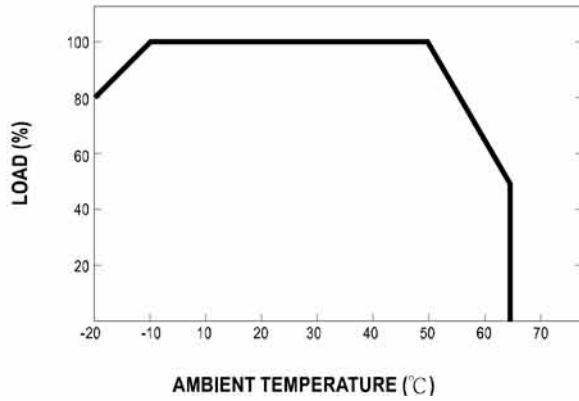
Terminal Pin No. Assignment

| Pin No. | Assignment |
|---------|------------|
| 1 | AC/L |
| 2 | AC/N |
| 3 | FG \perp |

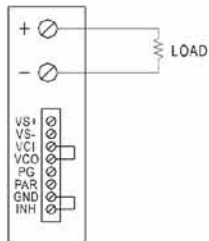
Control terminal Pin No. Assignment (CN1) : Dinkle 51HDBC-O8P or equivalent

| Pin No. | Assignment | Pin No. | Assignment | Mating With |
|---------|------------|---------|------------|-----------------------------------|
| 1 | VS+ | 5 | PG | Dinkle 51SDB-O8P or equivalent |
| 2 | VS- | 6 | PAR | |
| 3 | VCI | 7 | GND | |
| 4 | VCO | 8 | INH | |

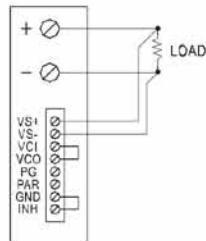
Derating Curve:



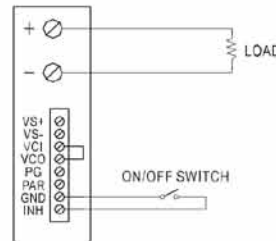
Control Terminal Instruction Manual:



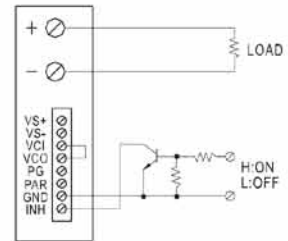
USING INTERNAL VOLTAGE CONTROL



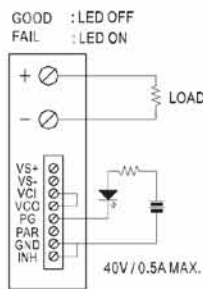
REMOTE SENSING



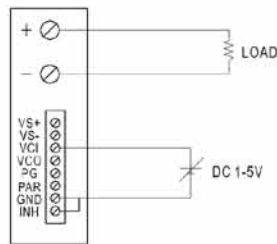
ON/OFF CONTROL BY SWITCH



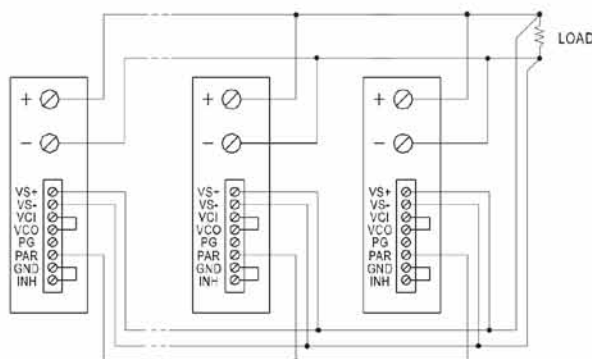
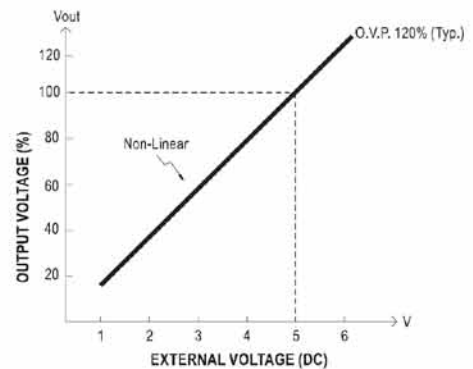
ON/OFF CONTROL BY TRANSISTOR



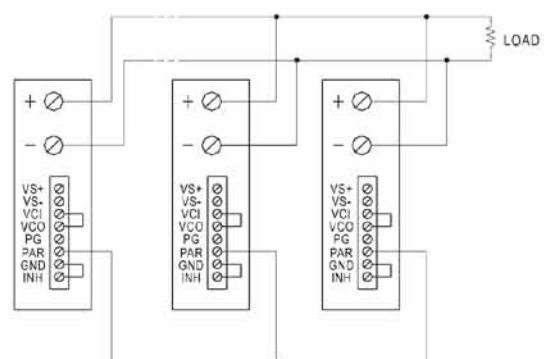
POWER GOOD SIGNAL



OUTPUT VOLTAGE ADJUST WITH DC 1-5V



PARALLEL OPERATION WITH REMOTE SENSING



PARALLEL OPERATION WITHOUT REMOTE SENSING