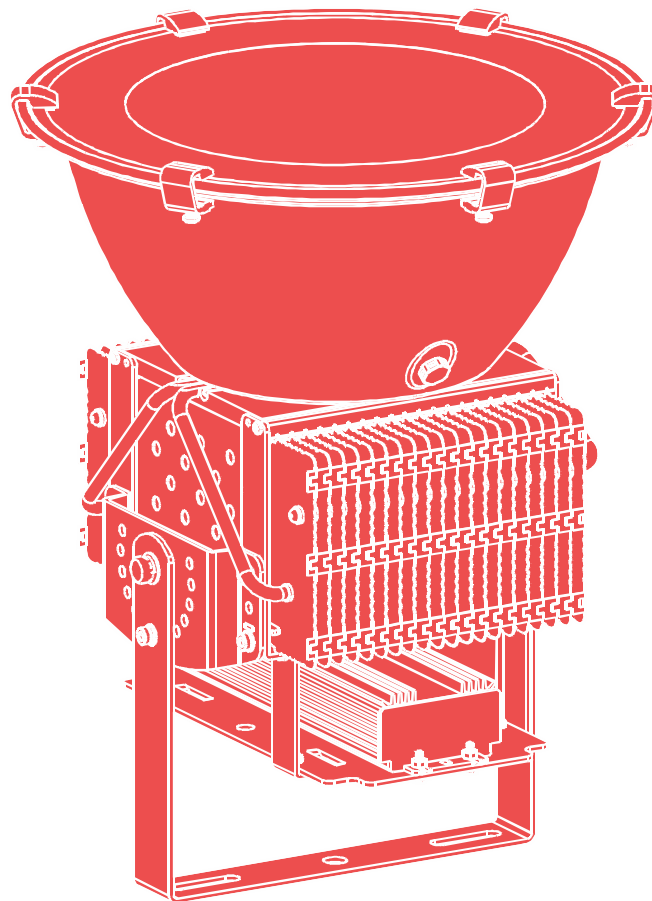


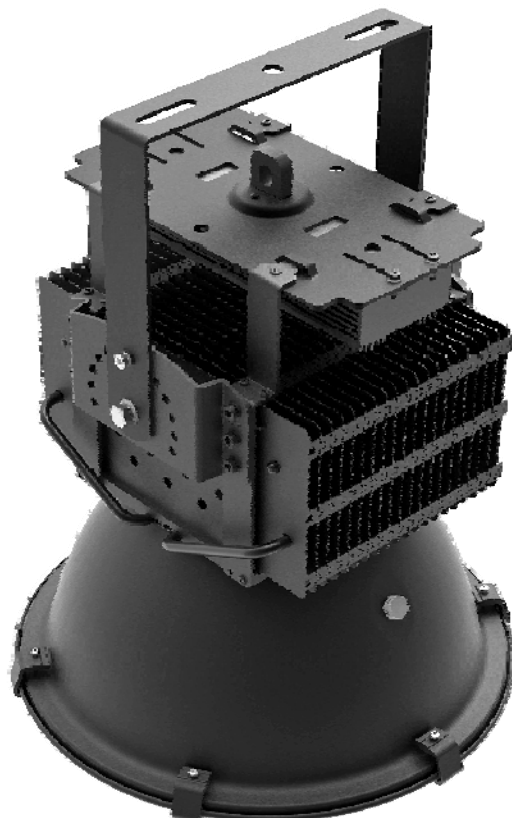
200W LED Hight Bay Light



CATALOGUE

Product Picture	1
Technology Parameter	2
Split Graph	3
Product Drawing	4
Heat Radiation testing report	5
Package	8

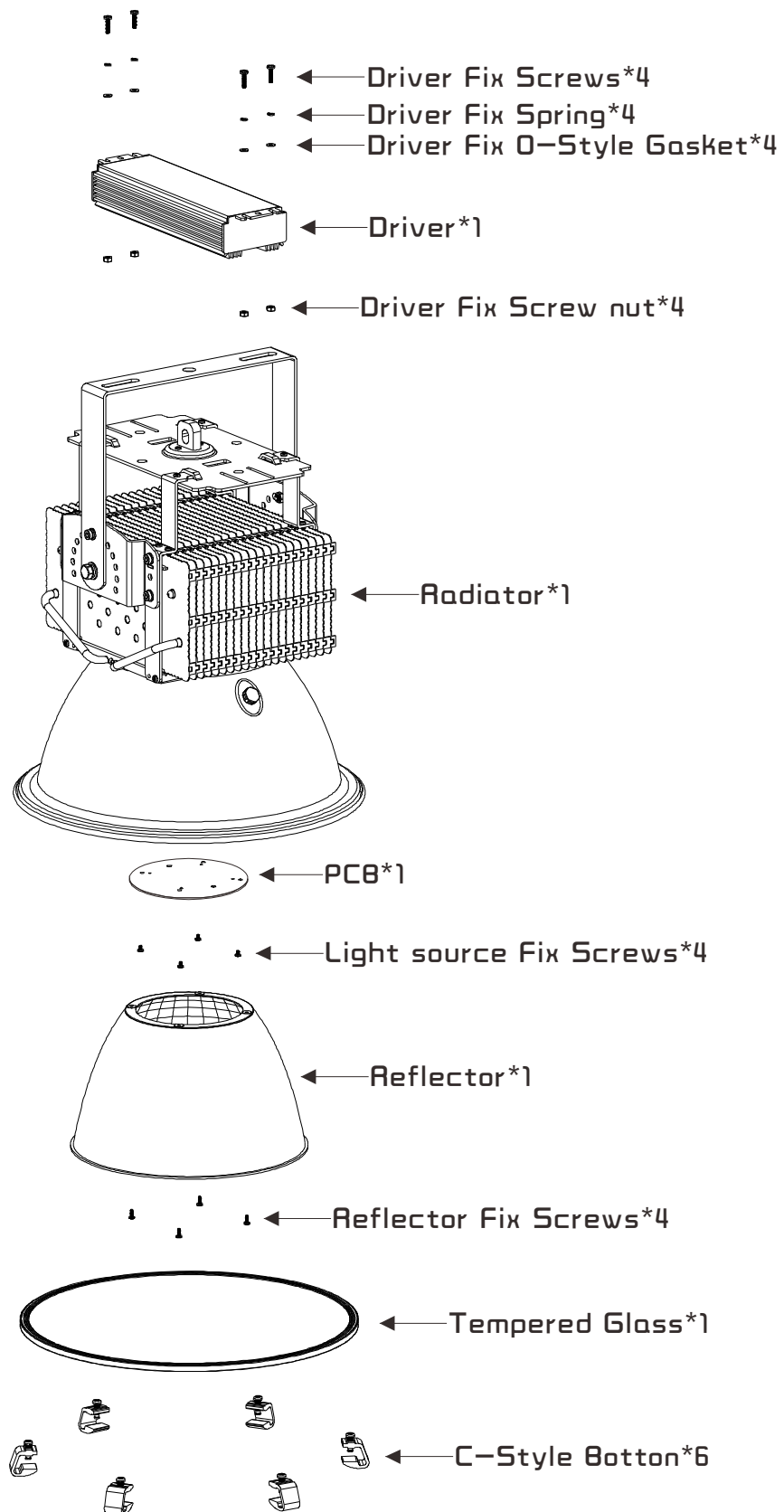
Product Picture



Technology Parameter

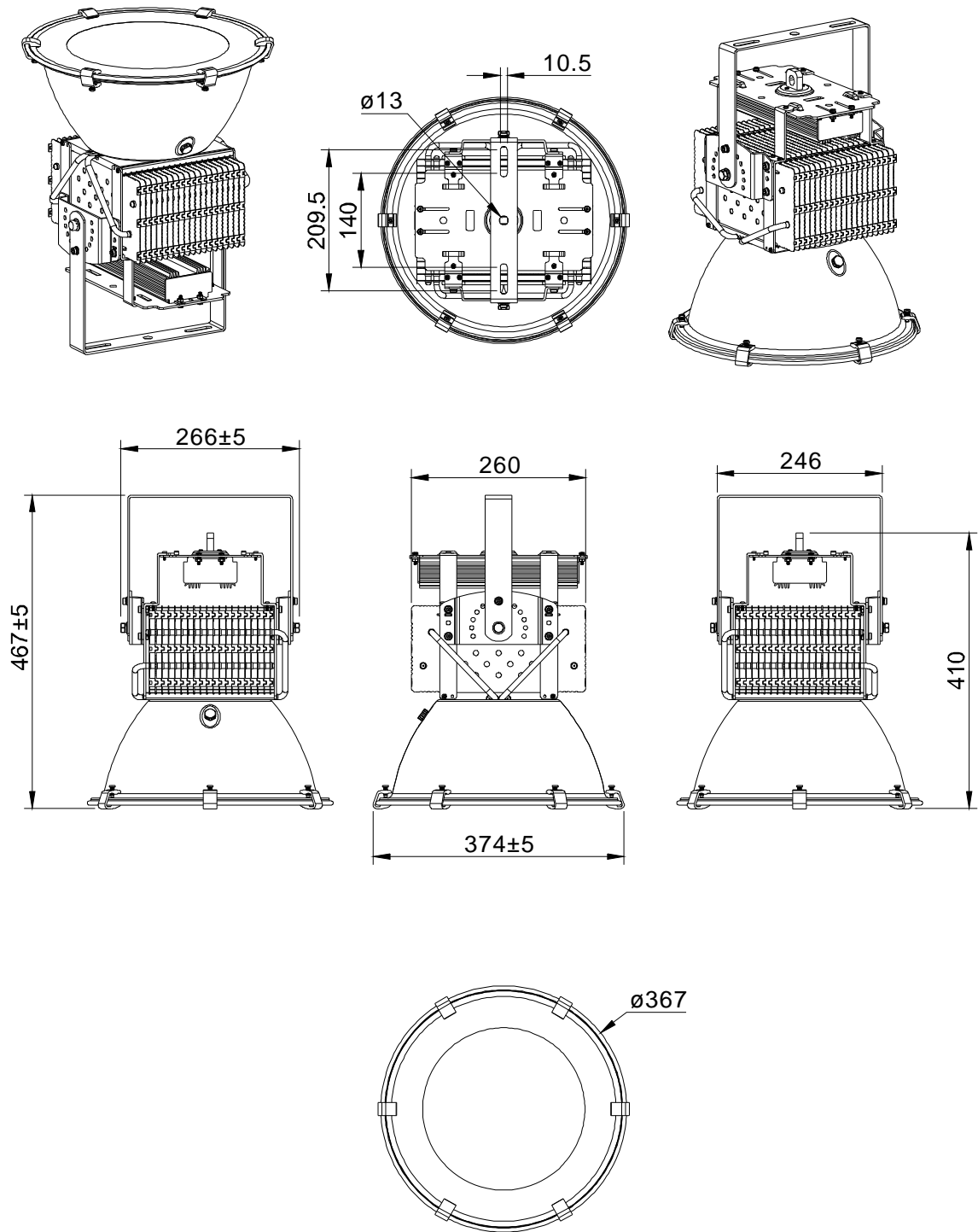
Model:		XJ-HB200W-H	Type:	Industrial Lighting
Product Name:		200W LED High Bay Light	Std&AUT:	CE、ROHS
Application:		Warehouse, workshop, gymnasium, exhibition center and so on		
	Type	Item	Light Source Parameter	
P r o d u c t S p e c i a l i t y 1	Basic Parameter	LED Type and Qty	Voltage/Current	5.7A、30-33V
			Quantity	3020 smd 380pcs/cree xbd 130pcs
		Input Voltage	100V-240VAC/277VAC	
		Main Material	Aluminum	
		Appearance	Cover: Gray/Radiator: Silver	
	Electric Parameter	Color Temperature	2800K-3200K / 4000-4500K / 5500-6500K	
		Total Power	200W	
		Total flux(LM)	17000-18000LM	
		CRI	75-85	
		Other	"Meanwell" 240W HLG Driver	
	Beam Angle	60°		
	Efficacy(Lm/W)	85-95LM/W		
	Package	1pcs/Box, volume: 45.5cmx45.5cmx51cm?0.115m³		
	Operating Environment	Temperature:-30°C-70°C Humidity: 20%-90%		
	Life	50000 Hours		

Split Graph



Product Drawing

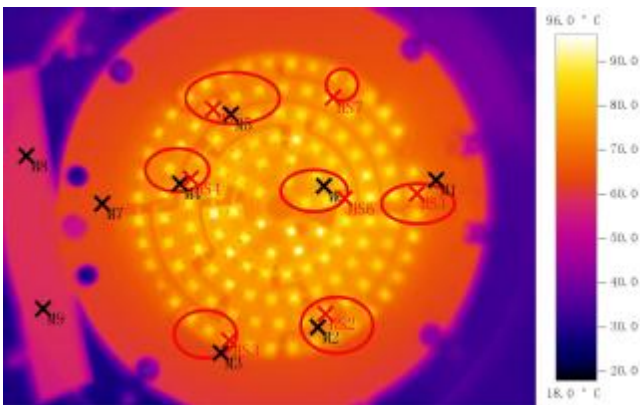
Weight:



Heat Radiation testing report

Date : 2012-12-29

Test Time : 16:30:44



Radiance : 0.95

Reflect Temperature[°C]: 35.0

Picture :

Testing Point	Temperature [°C]	Radiance	Reflect Temperature [°C]	Mark
M 1	68.3	0.95	35.0	PCB
M 2	70.7	0.95	35.0	PCB
M 3	64.0	0.95	35.0	PCB
M 4	72.3	0.95	35.0	PCB
M 5	70.9	0.95	35.0	PCB
M 6	76.8	0.95	35.0	PCB
M 7	64.2	0.95	35.0	PCB
M 8	58.7	0.95	35.0	PCB
HS 1	89.6	0.95	35.0	Light Source
HS 2	87.0	0.95	35.0	Light Source
HS 3	86.2	0.95	35.0	Light Source
HS 4	87.6	0.95	35.0	Light Source
HS 5	86.1	0.95	35.0	Light Source
HS 6	89.1	0.95	35.0	Light Source
HS 7	88.7	0.95	35.0	Light Source

Mark :

Output Power : 194W, 234V\0.858A\0.968PF

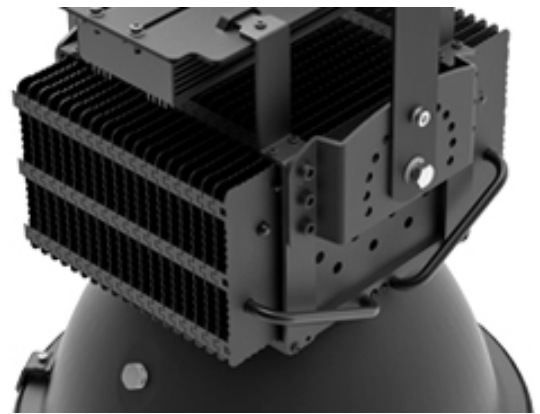
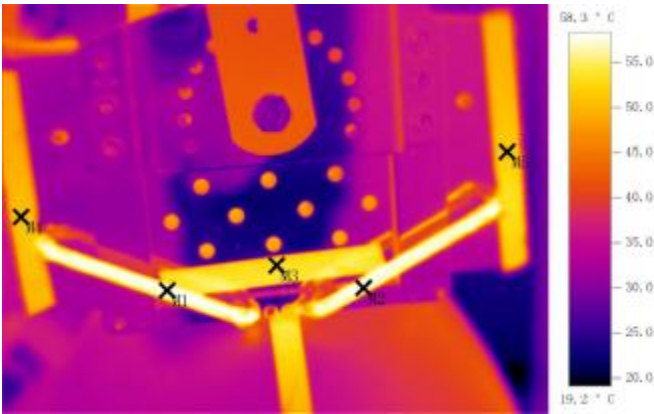
Input Voltage : 220V

Light Source : Cree-XBD , 130pcs , 1.538W/pcs

Heat Radiation testing report

Date : 2012-12-29

Test Time : 16:30:44



Radiance : 0.95
Reflect Temperature [°C]: 35.0

Picture :

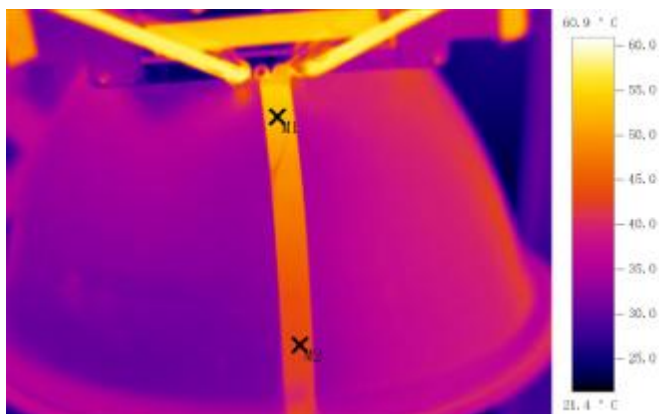
Testing Point	Temperature[°C]	Radiance	Reflect Temperature [°C]	Mark
M 1	58.0	0.95	35.0	Heat pipe
M 2	57.3	0.95	35.0	Heat pipe
M 3	53.3	0.95	35.0	Heat pipe
M 4	50.6	0.95	35.0	Heat pipe
M 5	51.7	0.95	35.0	Heat pipe

Mark :

Heat Radiation testing report

Date : 2012-12-29

Test Time :16:30:44



Radiance : 0.95
Reflect Temperature [°C]: 35.0

Picture :

Testing Point	Temperature [°C]	Radiance	Reflect Temperature [°C]	Mark
M 1	52.6	0.95	35.0	Heat pipe
M 2	42.9	0.95	35.0	Heat pipe

Mark :

Package

Quality : 1 pcs/Box

Weight :

volume : 45.5cmx45.5cmx51cm≈0.115m³

